

# FULL PORT FORGED BRASS BALL VALVE

- 600 W.O.G.
- 150 PSI Saturated Steam
- Conforms to MSS SP-110
- Blow-out Proof Stem
- Screwed Ends & CxC



## NOMENCLATURE AND MATERIALS

NO.	PART	MATERIAL	SPEC.JIS	SPEC.ASTM	NO.	PART	MATERIAL	SPEC.JIS	SPEC.ASTM
1	NUT	STEEL	S10C	AISI-1010	7	BALL DISC PACKING	TEFLON	PTFE	PTFE
2	HANDLE	STEEL	SS41	A283-D	8	BALL DISC	BRASS FORGED BRASS	C3604B C3771B	B16-C36000 (1/8"-3/4") B124-C37700 (1"-4")
3	STEM GLAND SCREW	BRASS	C3604B	B16-C36000	9	END PLUG	FORGED BRASS	C3771B	B124-C37700
4	STEM PACKING	TEFLON	PTFE	PTFE	10	DRAIN PACKING	RUBBER	NBR	NBR
5	STEM	BRASS	C3604B	B16-C36000	11	DRAIN CUP NUT	BRASS	C3604B	B16-C36000
6	BODY	FORGED BRASS CAST BRASS	C3771B YBSC3	B124-C37700 (1/8"-1 1/2") B584-C85700 (2"-4")	* F1361FP 1/2"~2" FM, CSA approval				



FIG:F1361FP

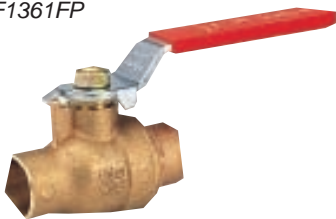
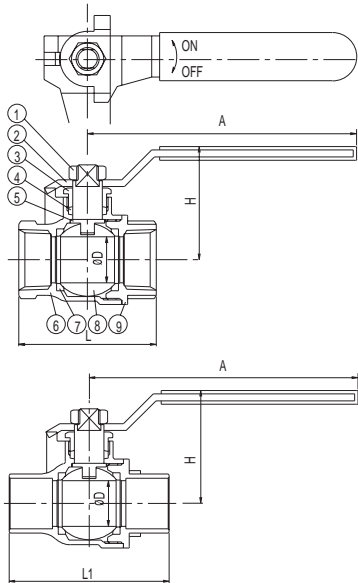


FIG:F1362FP



### DIMENSIONS-QUANTITIES / F1361FP & F1362FP

NOMINAL SIZE	DIMENSION (mm)					PCS	
	L	L1	H	D	A	Carton	Case
1/8"	46	/	37	10	84	180	400
1/4"	46	/	37	10	84	180	400
3/8"	46	41	37	10	84	180	400
1/2"	51	49	39	12.7	84	120	400
3/4"	60	70	50	20	118	90	200
1"	73	84	54	25	118	60	144
1 1/4"	84	96	66	32	134	36	80
1 1/2"	92	109	70	38	134	24	64
2"	110	137	88	50	200	12	30
2 1/2"	131	158	98	63	200	8	24
3"	150	182	106	75	200	6	20
4"	164	/	106	75	200	4	8

### DIMENSIONS-QUANTITIES / F1361FPW & F1362FPW

NOMINAL SIZE	DIMENSION (mm)						PCS	
	L	L1	H	D	A	B	Carton	Case
1/2"	51	49	39	12.7	84	23	120	400
3/4"	60	70	50	20	118	28	60	200
1"	73	84	54	25	118	32	36	144

## • With Waste Drain



FIG:F1361FPW

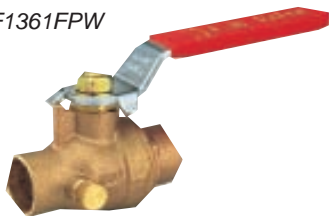
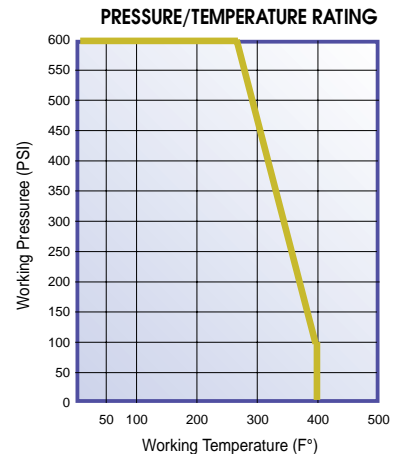
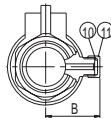


FIG:F1362FPW



\* F1361FP, F1362FP, F1361FPW, F1362FPW series  
\* F1161FP, F1162FP: 1/2"~1 1/2" only

