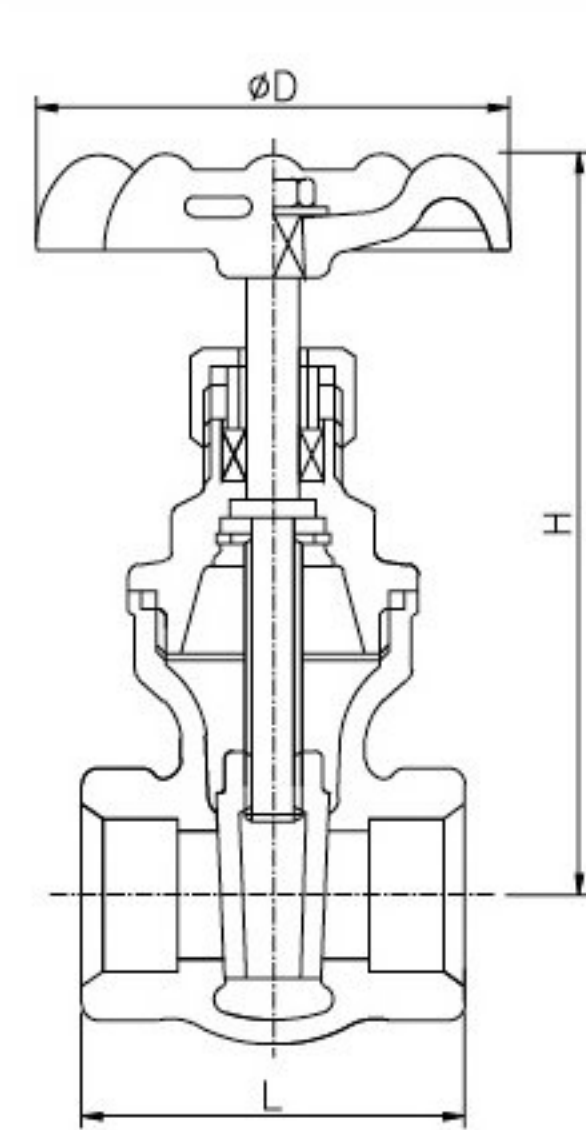


材質	標稱壓力	品名	產品編號
SUS304/316	15S200WOG	不銹鋼絲口閘閥	FS111
SUS304/316	15S200WOG	不銹鋼絲口逆止閥	FS211
SUS304/316	15S200WOG	不銹鋼絲口截止閥	FS411
SUS304/316	800WOG	不銹鋼絲口球閥 (一片式)	FS311
SUS304/316	1000WOG	不銹鋼絲口球閥 (二片式)	FS312
SUS304/316	1000WOG	不銹鋼絲口球閥 (三片式)	FS313
SUS304/316	1000WOG	不銹鋼對焊球閥 (三片式)	FS313D
SUS304/316	1000WOG	不銹鋼承插焊球閥 (三片式)	FS313C×C
SUS304/316	1.6Mpa	不銹鋼絲口Y型過濾器	FS811

FS-111 不銹鋼絲口閘閥 STAINLESS STEEL GATE VALVE



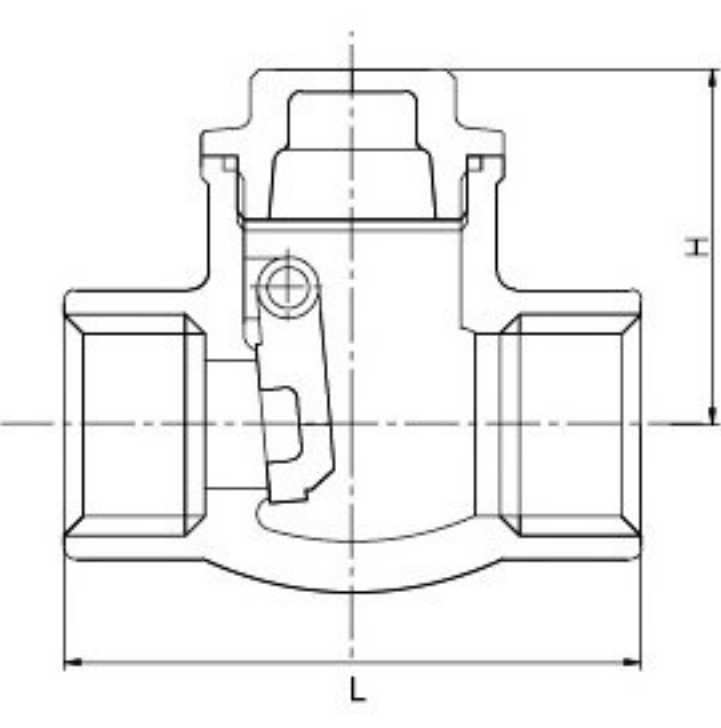
單位/mm

尺寸	1/2	3/4	1	1-1/4	1-1/2	2
L	50	60	63	70.5	75	88
H	87.5	96	107.5	118	140.5	160
D	73	73	78	78	100	100

最高使用壓力	
180°C以下之靜流水	飽和蒸汽
1.6Mpa	0.6Mpa

零件PART	材質MATERIAL
閥體 BODY	STAINLESS STEEL CF8M
閥蓋 BONNET	STAINLESS STEEL CF8M
閥桿 STEM	STAINLESS STEEL SUS316
閥盤 DISC	STAINLESS STEEL CF8M
迫緊螺帽 P/N	STAINLESS STEEL CF8M
迫緊 PACKING	PTFE
手輪 HANDWHEEL	CAST IRON FC20

FS-211 不銹鋼絲口止回閥 STAINLESS STEEL SWING CHECK VALVE



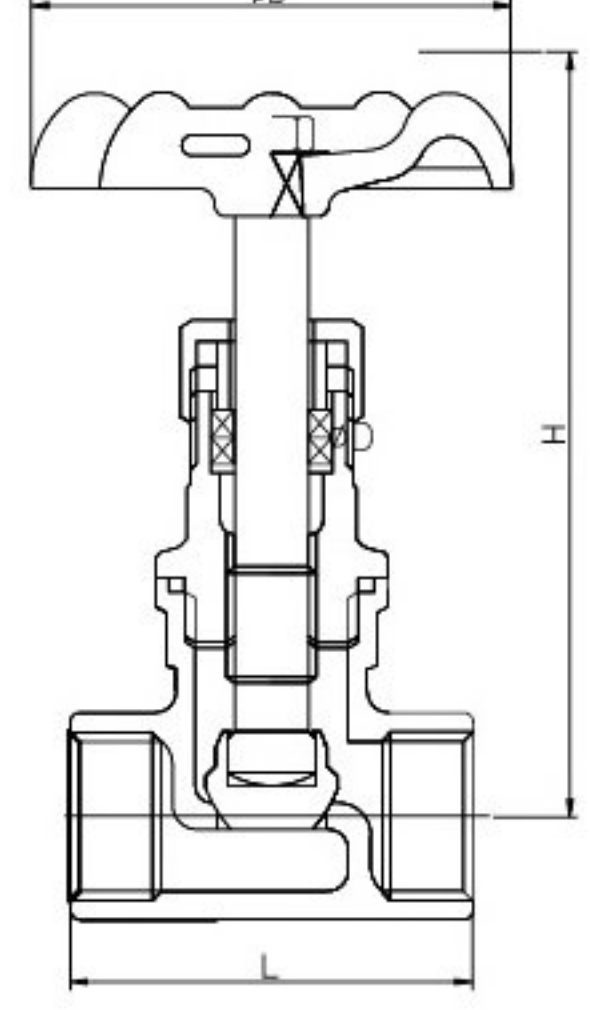
單位/mm

尺寸	1/2	3/4	1	1-1/4	1-1/2	2
L	65	82	96	105	120	138
H	48	53.5	59	70	75	84

最高使用壓力	
180°C以下之靜流水	飽和蒸汽
1.6Mpa	0.6Mpa

零件PART	材質MATERIAL
閥體 BODY	STAINLESS STEEL CF8M
閥蓋 BONNET	STAINLESS STEEL CF8M
閥盤 DISC	STAINLESS STEEL CF8M
堵頭 PLUG	STAINLESS STEEL SUS316
銷 P/N	STAINLESS STEEL SUS316

FS-411 不銹鋼絲口截止閥 STAINLESS STEEL GLOBE VALVE



單位/mm

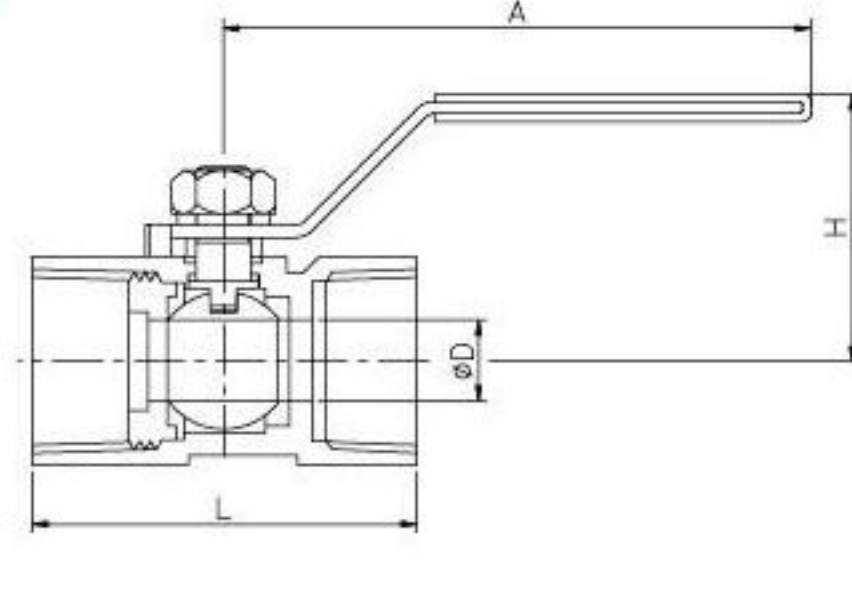
尺寸	1/2	3/4	1	1-1/4	1-1/2	2
L	90	100	120	140	170	200
H	100	105	113	143	167	181
D	72	72	78	100	128	128

最高使用壓力	
180°C以下之靜流水	飽和蒸汽
1.6Mpa	0.6Mpa

零件PART	材質MATERIAL
閥體 BODY	STAINLESS STEEL CF8M
閥蓋 BONNET	STAINLESS STEEL CF8M
閥桿 STEM	STAINLESS STEEL SUS316
閥盤 DISC	STAINLESS STEEL CF8M
迫緊螺帽 P/N	STAINLESS STEEL SUS304
迫緊 PACKING	PTFE
手輪 HANDWHEEL	CAST IRON FC20

FS-311 不銹鋼絲口球閥 ONE PIECE STAINLESS STEEL BALL VALVE

可禁油處理



單位/mm

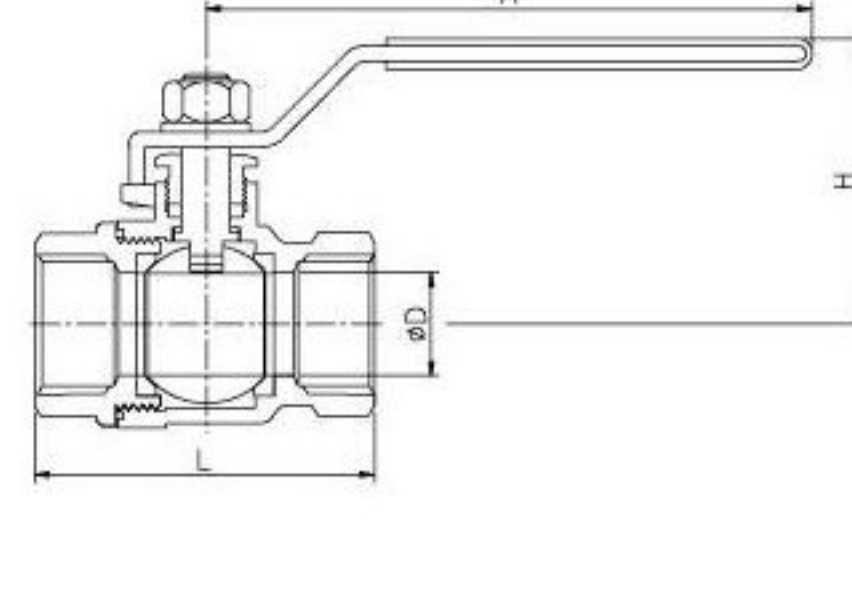
尺寸	1/4	3/8	1/2	3/4	1	1-1/4	1-1/2	2
D	5	7	9	12	15	20	25	32
L	40	45	57	60	72	77	88	100
H	28	30	34	38	50	56	60	65
A	70	70	90	90	110	120	130	140

最高使用壓力	
常溫之水、油、瓦斯及空氣	飽和蒸汽
1.6Mpa	0.6Mpa

零件PART	材質MATERIAL
閥體 BODY	STAINLESS STEEL CF8M
閥蓋 BONNET	STAINLESS STEEL CF8M
閥桿 STEM	STAINLESS STEEL SUS 316
閥球 BALL	STAINLESS STEEL CF8M
球墊 BALL SEAT	PTFE
把手 HANDLE	STAINLESS STEEL 304

FS-312 不銹鋼絲口球閥 TWO PIECES STAINLESS STEEL BALL VALVE

可禁油處理



單位/mm

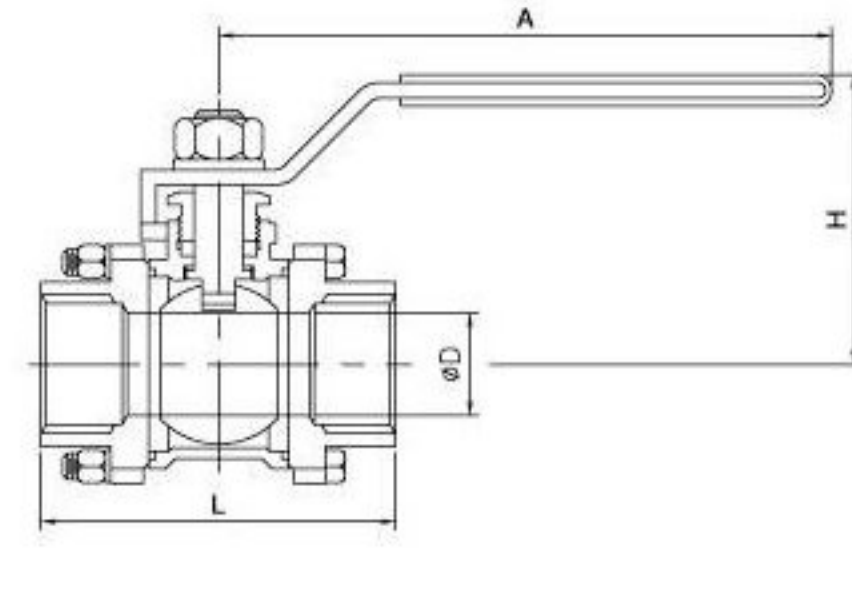
尺寸	1/4	3/8	1/2	3/4	1	1-1/4	1-1/2	2	2-1/2	3
D	10	12	15	20	25	32	40	50	65	80
L	53	53	56	65.5	78	87	99	114	156	171
H	50	50	58	62	72	80	90	98	125	138
A	90	90	100	120	140	180	200	220	240	240

最高使用壓力	
常溫之水、油、瓦斯及空氣	飽和蒸汽
1.6Mpa	0.6Mpa

零件PART	材質MATERIAL
閥體 BODY	STAINLESS STEEL CF8M
閥蓋 BONNET	STAINLESS STEEL CF8M
閥桿 STEM	STAINLESS STEEL SUS 316
閥球 BALL	STAINLESS STEEL CF8M
球墊 BALL SEAT	PTFE
把手 HANDLE	STAINLESS STEEL SUS 304

FS-313 不銹鋼絲口球閥 THREE PIECES STAINLESS STEEL BALL VALVE

可禁油處理



單位/mm

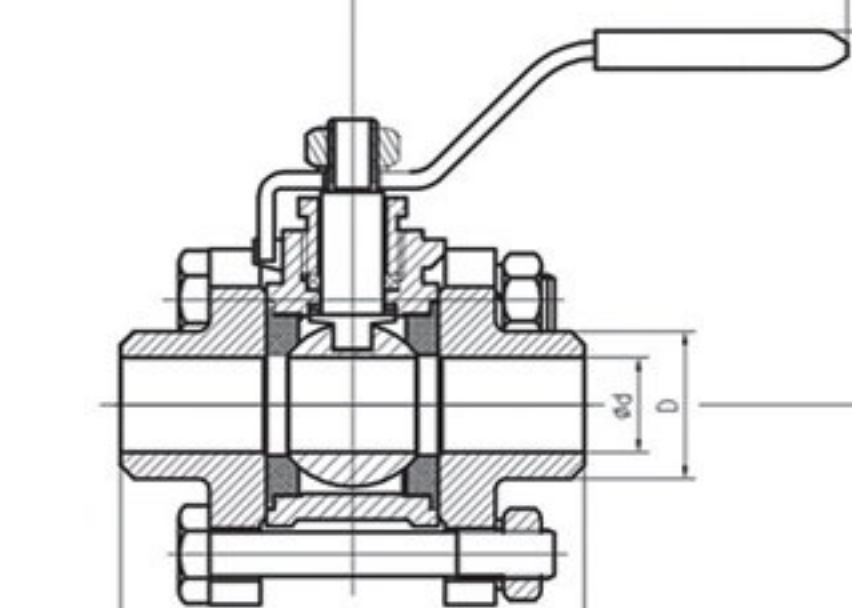
尺寸	1/4	3/8	1/2	3/4	1	1-1/4	1-1/2	2	2-1/2	3	4
D	10	12	15	20	25	32	38	50	65	80	100
L	67.5	67.5	72.5	81.5	88	108	120	142	181	210	267
H	51	51	52.5	67.5	71	89	91.5	99	135	140	170
A	80	80	105	115	135	165	165	170	240	240	260

最高使用壓力	
常溫之水、油、瓦斯及空氣	飽和蒸汽
1.6Mpa	0.6Mpa

零件PART	材質MATERIAL
閥體 BODY	STAINLESS STEEL CF8M
閥蓋 BONNET	STAINLESS STEEL CF8M
閥桿 STEM	STAINLESS STEEL SUS 316
閥球 BALL	STAINLESS STEEL CF8M
球墊 BALL SEAT	PTFE
把手 HANDLE	STAINLESS STEEL SUS 304
螺栓 BOLT	STAINLESS STEEL SUS 304
螺帽 NUT	STAINLESS STEEL SUS 304

FS-313D 不銹鋼對焊球閥 THREE PIECES STAINLESS STEEL BALL VALVE

可禁油處理



單位/mm

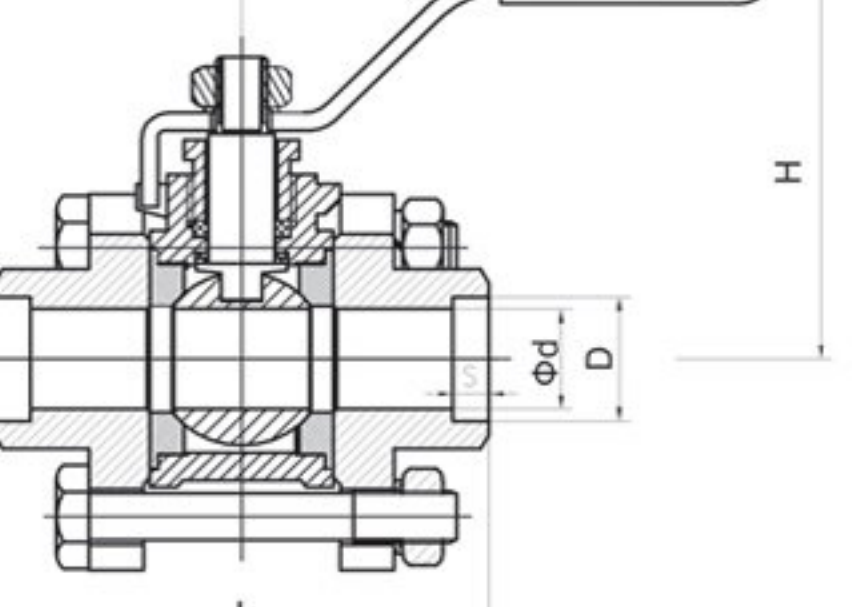
尺寸	1/4	3/8	1/2	3/4	1	1-1/4	1-1/2	2
D	13.5	16.8	21.4	26.7	33.4	42.2	48.5	60.5
L	67.5	67.5	72.5	82.5	94	110	123	145
H	51	51	52.5	67.5	71	89	91.5	99
A	80	80	105	115	135	165	165	170

最高使用壓力	
常溫之水、油、瓦斯及空氣	飽和蒸汽
1.6Mpa	0.6Mpa

零件PART	材質MATERIAL
閥體 BODY	STAINLESS STEEL CF8M/CF8
閥蓋 BONNET	STAINLESS STEEL CF8M/CF8
閥桿 STEM	STAINLESS STEEL SUS 316/SUS 304
閥球 BALL	STAINLESS STEEL CF8M/CF8
球墊 BALL SEAT	PTFE
把手 HANDLE	STAINLESS STEEL SUS 304
螺栓 BOLT	STAINLESS STEEL SUS 304
螺帽 NUT	STAINLESS STEEL SUS 304

FS-313C×C 不銹鋼三片式承插焊球閥 THREE PIECES STAINLESS STEEL BALL VALVE

可禁油處理



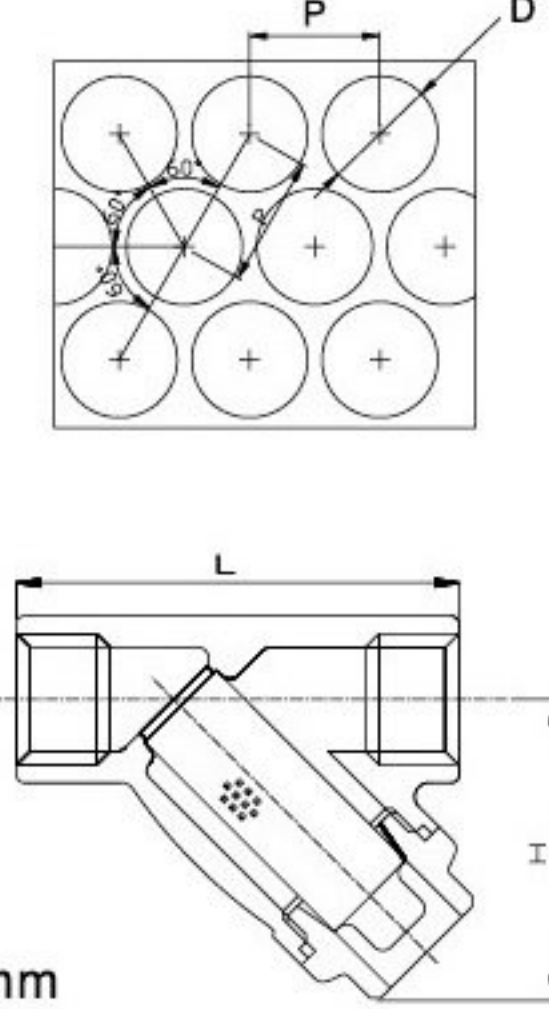
單位/mm

尺寸	1/4	3/8	1/2	3/4	1	1-1/4	1-1/2	2
D	14	17.5	22	27.5	34	43	49	61
Φd	8	10	15	20	25	32	38	49
L	67.5	67.5	72.5	82.5	90	110	123	145
H	51	51	52.5	67.5	71	89	91.5	99
A	80	80	105	115	135	165	165	170

最高使用壓力	
常溫之水、油、瓦斯及空氣	飽和蒸汽
1.6Mpa	0.6Mpa

零件PART	材質MATERIAL
閥體 BODY	STAINLESS STEEL CF8M/CF8
閥蓋 BONNET	STAINLESS STEEL CF8M/CF8
閥桿 STEM	STAINLESS STEEL SUS 316/SUS 304
閥球 BALL	STAINLESS STEEL CF8M/CF8
球墊 BALL SEAT	PTFE
把手 HANDLE	STAINLESS STEEL SUS 304
螺栓 BOLT	STAINLESS STEEL SUS 304
螺帽 NUT	STAINLESS STEEL SUS 304

FS-811 不銹鋼絲口Y型過濾器 STAINLESS Y-STRAINER



單位/mm

尺寸	1/2	3/4	1	1-1/4	1-1/2	2
L	55	69	79	94	110	130
H	36	38	51	60	72	90
D	1	1	1.5	1.5	2	2
P	2	2	2.5	2.5	3.5	3.5

最高使用壓力	
180°C以下之靜流水	飽和蒸汽
1.6Mpa	0.6Mpa

零件PART	材質MATERIAL
閥體 BODY	STAINLESS STEEL CF8M
閥蓋 BONNET	STAINLESS STEEL CF8M
過濾網 SCREEN	STAINLESS STEEL SUS316
墊片 GASKET	PTFE